

EZ Flash 5 - Manual

First, congratulations to your purchase of an EZ Flash 5!

In this manual, *EZ Flash V* & *EZ Flash 5* will hereafter be called *EZ5*.

1. What's inside the box?

- 1 x EZ5 DS card



2. What else is needed to use the EZ5?



You need a Micro-SD/TransFlash memory card and a computer with a compatible memory card reader (either built-in or external).

Please take note that some brands of Micro-SD/TransFlash memory cards have much faster read & write speeds compared to others. The EZ5 can be used even with slow Micro-SD/TransFlash cards but in such cases a special tool, the Hybrid tool, may be needed for some games to function properly. Users with faster speed Micro-SD/TransFlash cards will not need to use this tool at all.

3. Preparing your Micro-SD/TransFlash memory card

It is advised that you format your Micro-SD/TransFlash with FAT32 for best performance, although FAT16 will also work.

In order for the EZ5 to function properly some files are needed to be placed on your Micro-SD/TransFlash, in a folder called /shell. Download the latest version of these files by going to <http://www.ezflash.cn/en>. As it can be slow to download files from Chinese websites, updates can also be found on several US & EU resellers websites, such as <http://www.TotalGBA.com>. Simply extract the archive to your Micro-SD/TransFlash.

4. Updating the EZ5 firmware to the latest version

As the EZ Team continue to improve functions of the EZ5, new updates of the firmware (kernel) will be released. It is advised that you check <http://www.ezflash.cn/en> periodically and download the latest version. Again, updates can also be found on resellers websites, such as <http://www.TotalGBA.com>. Once downloaded, extract the file inside the .zip to the root of your Micro-SD/TransFlash card.

You should now have a folder on your Micro-SD/TransFlash called /shell and a file in the root called ez5upldr.bin

Remove the Micro-SD/TransFlash card from your memory card reader and insert it into your EZ5 card. Next, insert the EZ5 card into your Nintendo DS console and power it up. If your DS is set to autoboot to DS game, press the R button right away. If your DS is set to start with the DS Menu, simply choose to start the "EZ-Flash V" and then press and hold the R button.

If done correctly you will be taken to the firmware upgrade area. You can now release the R button. Instructions will be shown on screen. To upgrade the software press the R button again. The update will take about 15 seconds and once done you can press the A button to continue to the main EZ5 menu. It is no longer necessary to keep the ez5upldr.bin file on your Micro-SD/TransFlash so feel free to delete it next time you have it connected to your computer.

Also found in the firmware upgrade area is an option to make your EZ5 act like a PassMe device. Pressing the L button will enable you to boot SLOT-2 devices (GBA gamepak sized flash cartridges) in DS mode.

5. Settings in the EZ5 menu

When in the EZ5 menu, press L (and hold) and then press R. If done correctly, a Settings screen will appear.

The default language is Chinese. If you feel more comfortable with English, press right on the D-pad to set it to English instead.

You will also notice a "MicroSD" speed setting. By default it is set to 'Auto Detect' the speed of your Micro-SD/TransFlash. If you later experience problems running games or applications, remember to go to this screen and set the speed manually instead.

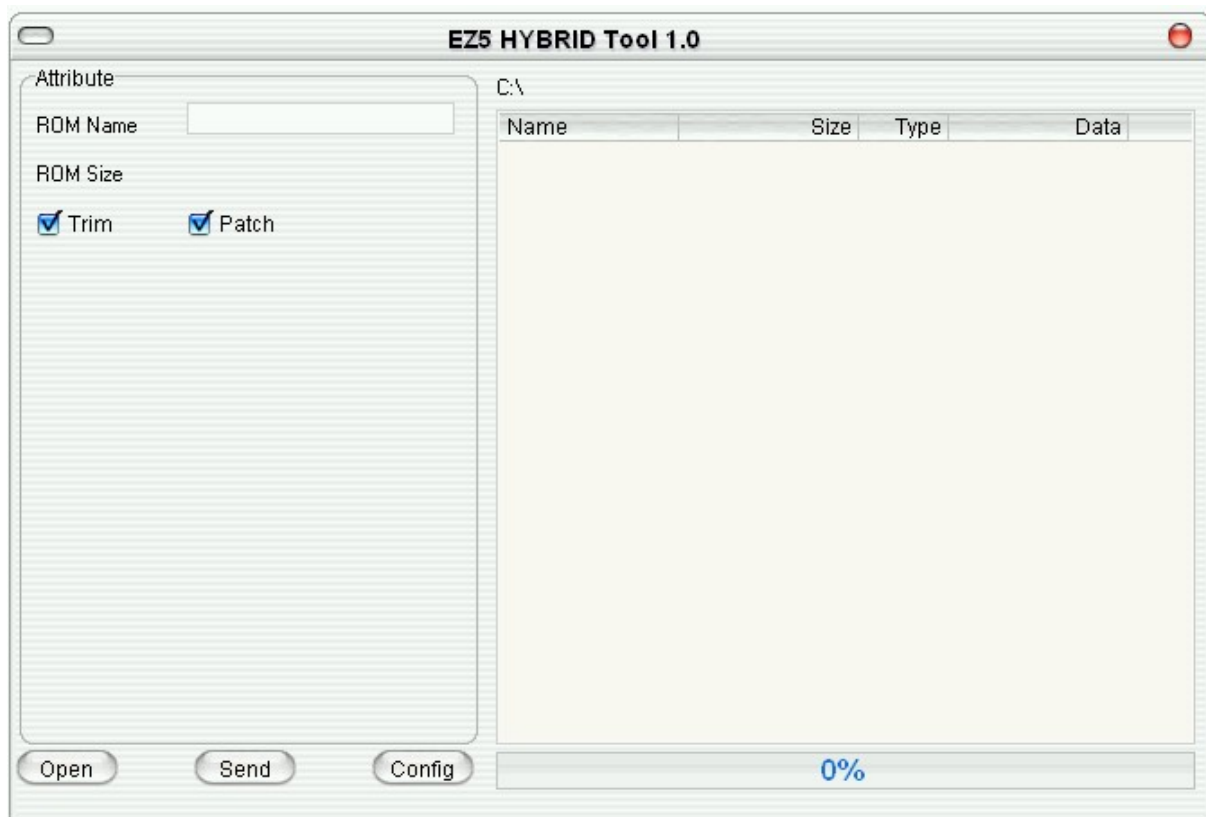
If possible, you should try to use the EZ5 with a faster Micro-SD/TransFlash card such as PNY, Kingston or Kingmax. EZ Team currently recommend the following manual speed settings:

Brand	Speed (lower number is faster/better)
PNY	3-4
Kingston	5-7
Kingmax	6-8
Sandisk	10-12

If you experience problems with white screens when starting games or applications, try to set a higher speed setting. If the problem doesn't go away, it's possible that you have a slow Micro-SD/TransFlash card and may need to use the Hybrid tool mentioned earlier. You can read about the Hybrid tool in the next paragraph.

6. The Hybrid tool

The Hybrid tool was created to allow users with slow Micro-SD/TransFlash cards to still be able to play troublesome games with their EZ5. A handful of known games and applications may have some irregularities with video or music when playing them with a slow Micro-SD/TransFlash card. Running them in through Hybrid tool will help to fix such problems.



Simply 'Open' the game or application you are experiencing problems with. Press 'Send' to save the patched game on your hard drive or directly to your Micro-SD/TransFlash card. This process only takes a second or two.

A bonus feature of this tool is that it can remove empty space at the end of files so they take up less space on your Micro-SD/TransFlash card. This feature is called 'Trim'.

7. Saves & Saving

A dedicated save-chip on your EZ5 card will automatically handle saving for you. When playing games, just save as you would normally do. Save files for all games & applications are stored in a folder called /SAVE. The EZ5 will create a save file for each game & application that you run and place them in this folder. Save files have the same filename as the game or application you ran, but will end with .sav instead of .nds.

Different games use different types of saving. There are 5 types of saves: 4K EEPROM, 64K EEPROM, 512K EEPROM, 2M FLASH and 4M FLASH. Some games & applications do not make use of saving at all.

The EZ5 knows what type of saving a particular game uses by checking a file called ezsav.lst inside the /shell folder. EZ Team regularly put updated versions of this file on their website so it is advised that you check <http://www.ezflash.cn/en> from time to time to make sure you are using the latest version. Again, updates can also be found on resellers websites, such as <http://www.TotalGBA.com>. Extract the file to the /shell folder on your Micro-SD/TransFlash card and overwrite the previous one.

It's also possible for you to change the save type of a game or application manually. This could be needed if the game or application you want to run is not yet included in the ezsav.lst file. If you notice that saving in a game or application does not work, go to the EZ5 menu and move the marker to your game or application. The bottom screen of your DS will show the name of the game or application, a small logo and what type of saving is currently used. To change this preset value, press (and hold) the L button and browse through the different save types with the X and Y buttons. L+Y goes forward in the list, and L+X goes back again.

We hope that you will enjoy your EZ Flash 5 for years to come. Always feel free to contact us with suggestions on how we can improve your user experience with the EZ5 and we will do our best to get it done. Thanks!

EZ Team
<http://www.ezflash.cn/en>

Manual was last updated: January 2nd, 2007.