
**User's Guide for
Shuttle Bluetooth USB Dongle
PN21**

浩鑫藍芽裝置使用手冊

Shuttle®

User's Guide for Bluetooth USB Dongle

FCC Regulation Information

This device has been tested and is complied with Class B Digital Device, pursuant to part 15 of the FCC rules. The regulation provides reasonable protection against harmful interference in a residential installation. This equipment generates radio frequency energy and, if not properly installed and used, may cause harmful interference to radio or television reception. However, there is no guarantee that interference will not occur in a particular installation. If it does happen, users can try to correct it by one or more of the following measures:

- Reorient or relocate the receiving antenna.

- Increase the separation between the device and receiver.

- Connect the equipment into an outlet on a circuit different from that to which the receiver is connected.

- Consult the dealer or an experienced radio/TV technician for help.

Copyright

Copyright® 2002 by Shuttle® Inc. All Rights Reserved.

This publication, including all photos, illustrations, and software, is protected under international copyright laws, with all rights reserved. Reproducing any of the material contained herein is prohibited without the consent of the publisher.

Disclaimer

Shuttle® Inc. shall not be liable for any incidental or consequential damages resulting from improperly using this product. The company makes no representations or warranties regarding the contents herein. Information in this manual has carefully been checked for correctness; however, no guarantee is given to the future correctness of it. The company reserves the right to revise this manual or make changes in the specifications of the product at any time, without obligation to notify any person of such revision or changes.

Trademarks

Shuttle is a registered trademark of Shuttle Inc.

Intel Celeron, Pentium II/III/4 are registered trademarks of Intel Co.

AMD Athlon/Duron are registered trademarks of AMD Co.

Microsoft and Windows are registered trademarks of Microsoft Co.

General Notice: Other product names used in this publication are ascribed to their respective owners and acknowledged.

浩鑫®

藍芽裝置使用手冊

FCC(聯邦通信委員會)通告

本產品已通過測試。測試結果符合FCC第15章節B級數位設備規定。此規定提供合理的保護標準，使得符合標準的設備在室內安裝不會導致有害的干擾。本設備可能會產生射頻能量，若不按指示安裝則會對無線電通訊或電視的接收造成有害的干擾。但是某些特殊的安裝也會導致干擾的出現。如果本設備確實產生干擾的話，使用者可以利用下述的一種或多種方法來排除此干擾：

更改接收天線的方向和位置。

增加電腦和接收器之間的距離。

把電腦和接收器的電源線路分開，不使用同一個插座。

請經銷商或有經驗的無線電/電視技術人員給予幫助。

版 權

浩鑫版權申明：2002版權所有。

未經浩鑫同意，本使用手冊內所有內容禁止複製、銷售、租借、發表或修改。

告 示

浩鑫對本手冊內所有資料及規格在未事先告知下可做一修改。浩鑫對文件內之錯誤與疏失無需負責，且未對文件資料更新作出承諾。

商 標

Shuttle為浩鑫公司之註冊商標。

Intel Celeron, Pentium II/III/4為英特爾公司之註冊商標。

AMD Athlon/Duron為超微公司之註冊商標。

Microsoft與Windows為微軟公司之註冊商標。

本手冊內提及之其餘品牌及產品名稱各歸屬於他人之商標或註冊商標且已被同意使用於本手冊。

1.INTRODUCTION/ 簡介

- 1.1 Shuttle Bluetooth USB Dongle/
浩鑫藍芽無線產品.....1
- 1.2 Bluetooth Technology/
藍芽無線技術.....2
- 1.3 Package Checkup/
套件包內容.....3
- 1.4 Hardware Specifications/
硬體規格.....4

2.SOFTWARE SETUP/ 軟體設定

- 2.1 Before You Start/
軟體安裝前準備.....5
- 2.2 Driver/Software Installation/
安裝驅動程式 / 軟體.....6
 - 2.2.1 Install PN21 Driver/
安裝 PN21 驅動程式.....8

3.HARDWARE SETUP/ 硬體安裝

- 3.1 Hardware Installation/
硬體安裝.....15

4.BASIC OPERATIONS/ 基本應用

- 4.1 Basic Operations/
基本應用.....18
 - 4.2 Local Device Services/
本地端服務設定.....19
 - 4.3 Bluetooth Neighborhood Services/
藍芽芳鄰服務設定.....20
-

5.CONFIGURATION UTILITY/ 軟體相關設定

5.1 Bluetooth Console/ 藍芽控制台.....	22
5.2 Bluetooth Configuration/ 軟體相關設定.....	23
5.2.1 General Tab/ 一般設定選項.....	23
5.2.2 Accessibility Tab/ 進階設定選項.....	24
5.2.3 Discovery Tab/ 瀏覽選項.....	25
5.2.4 Information Exchange Tab/ 資料交換選項.....	27
5.2.5 Local Services Tab/ 本地端服務選項.....	28
5.2.6 Client Applications Tab/ 客戶端應用程式選項.....	29
5.2.7 Hardware Tab/ 硬體選項.....	30
5.2.8 Version Info Tab/ 硬體版本資訊選項.....	31
5.2.9 Notifications Tab/ 通知選項.....	31

6.Troubleshooting/ 疑難排解

6.1 Sympton (S) & Remedy (R)/ 問題與解答.....	32
---	----

1.INTRODUCTION/ 簡介

1.1 Shuttle® Bluetooth USB Dongle/

浩鑫® 藍芽無線產品

Low Cost, Short Range, and Seamless Integration

Thank you for purchasing Shuttle Bluetooth USB Dongle. It is a versatile technology that simplifies both communication and synchronization between devices utilizing Bluetooth wireless USB Dongles.

Shuttle Bluetooth wireless tech, based on a low-cost and short-range radio connection, serves to get rid of cables that connect devices at homes or in offices: desktops, laptops, printers, faxes, PDAs, mobiles, modems, keyboards, and other similar digital ones. Thus, Shuttle Bluetooth USB Dongle converts the connectivity of individual PC into a revolutionary and seamless integration.

花費少, 距離短, 整合性高

謝謝您使用支援 USB 規格之浩鑫藍芽無線產品。凡是使用此多功能產品的設備, 皆能享有彼此間相互連結且資料同步化處理的好處。

浩鑫藍芽無線科技是讓您在花費少的情況下, 就能享有短距離無線通訊的產品。它使得原本在家中或辦公場所內需要連接線的設備, 如: 桌上型電腦、筆記型電腦、印表機、傳真機、掌上型電腦、行動電話、數據機、和鍵盤等裝置, 在浩鑫藍芽無線技術支援下, 彼此之間再也不需要連接線來相互連結。因此, 浩鑫藍芽無線產品可說是對電腦及其週邊設備作了一具革命性的科技整合。

1.2 Bluetooth Technology/藍芽無線技術

The Shuttle Bluetooth USB Dongle allows a computer with a USB port to communicate with other Bluetooth-enabled devices.

The term, “Bluetooth” alludes to a worldwide standard for the wireless exchange of data between two Bluetooth-enabled devices. As the connection between them is established, one device (so-called the client), by the device operator, can request a connection to the other (the server), a connection that attempts to browse a remote computer, print a file, or dial out on a modem. The device that offers service responds to a request from the client device by means of a Bluetooth software that is always running in it, preparing itself well for a respond.

浩鑫藍芽無線產品能使一台電腦在有此裝置的情況下，和其它同樣有此裝置的設備彼此之間能夠相互連結與作用。

在世界標準下，“藍芽”一詞指的是設備彼此之間，在有藍芽裝置的驅動下，能夠作出資料無線交換的功用。當設備彼此間有連結裝置時，其中之一設備(客戶端)，在藍芽無線技術支援下，就能向另一設備(伺服器端)作出瀏覽遠端電腦、列印文件、或透過數據機上網等要求。伺服器端之藍芽設備在藉由藍芽軟體的程式驅動下，將會準備好資料以回應客戶端藍芽設備之要求。

1.3 Package Checkup/ 套件包內容

A complete package of PN21 Shuttle Bluetooth USB Dongle includes the items as listed below:

1. A Bluetooth USB Dongle (to which attached is a waterproof sticker with Dongle's model name and related numbers listed);
2. A USB daughter board;
3. A USB cable for the USB daughter board;
4. Two screws;
5. A Software CD;
6. A User's Guide.

一份完整的PN21浩鑫藍芽無線產品套件包應包含以下項目：

1. 一張藍芽無線卡(其上黏有一張標明產品型號與相關序號的防水貼紙)；
2. 一張USB子卡；
3. 一條USB子卡連接線；
4. 兩顆螺絲；
5. 一片軟體光碟；
6. 一本使用手冊。

1.4 Hardware Specifications/ 硬體規格

Product Name/ 產品名稱	Shuttle Bluetooth USB Dongle/ 浩鑫藍芽無線技術產品
Carrier Frequency/ 傳送頻率	2.4 ~ 2.483GHz
Data Rate/ 資料傳送接收速率	1Mbps
Ratio Performance Receiver/ 資料接收比率	Rx Sensitivity -85dBm/ 資料接收敏銳度-85dBm
Ratio Performance Transmitter/ 資料傳送比率	Power at Antenna Port (Class 1 ~ 100 Meter Free Space)/ 在天線端之功率(等級1 ~ 100 公尺可用空間)
Antenna/ 天線	Integrated PCB Antenna/ 整合性PCB天線
Operating Temperature/ 使用狀態下溫度	0 ~ 65
Storage Temperature/ 儲存狀態下溫度	-30 ~ 80
USB Compliance/ USB介面規格	Version 1.1/ 版本1.1
Dimension/ 尺寸	74 (L) x 41 (W) x 13 (H) mm/ 74 (長) x 41 (寬) x 13 (厚度) 公厘
Weight/ 重量	54g/ 54公克
Input Power/ 輸入電力	5V DC / 5伏特直流電
Input Current/ 輸入電流	Max. 80mA/ 最大80mA
Support Function / 支援功能	File Transfer, Dial-Up Networking, Network Access, Fax, Information Exchange, Point to Multi-Point Connection (1 Server, 7 Clients)/ 在一個伺服器端藍芽設備，七個客戶端藍芽設 備環境下，能支援文件移轉、撥接上網、網際 漫遊、傳真、和資料交換等功能

2.SOFTWARE SETUP/ 軟體設定

2.1 Before You Start/軟體安裝前準備

To activate the Bluetooth USB Dongle service, all drivers and supporting software must be installed and configured for both the server and client ends. Through the simplified installation of Bluetooth software, you can, with no efforts, establish wireless communication among all Bluetooth-equipped devices.

為了啟動藍芽無線裝置技術服務，您的伺服器端和客戶端設備都必須安裝相關驅動程式與軟體。完成安裝與相關設定後，您將可不費吹灰之力地建立起所有藍芽設備彼此間之無線連結。

Before installation, please check your system in advance and ensure it that meets the minimum requirements as described below:

安裝藍芽無線裝置前，請先檢查您的系統是否符合下列硬體需求：

- | | |
|----------------------------------|---|
| 1. Processor/處理器: | Intel Pentium III/4, Intel Celeron, and AMD Athlon/Duron; |
| 2. Operating System/作業系統: | Microsoft Windows 98/ME/2000/XP; |
| 3. System Memory/記憶體: | 32MB at least/至少32MB; |
| 4. Hard Drive Free Space/所需硬碟空間: | 18MB. |

Note: Please finish the software setup in advance before turning to hardware installation.

注意：請先完成軟體安裝後再進行硬體安裝。

2.2 Driver/Software Installation/安裝驅動程式/軟體

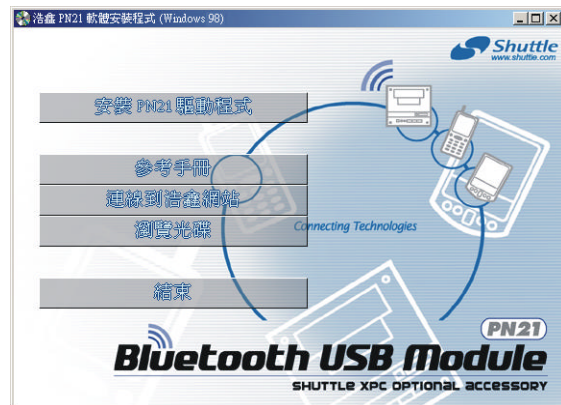
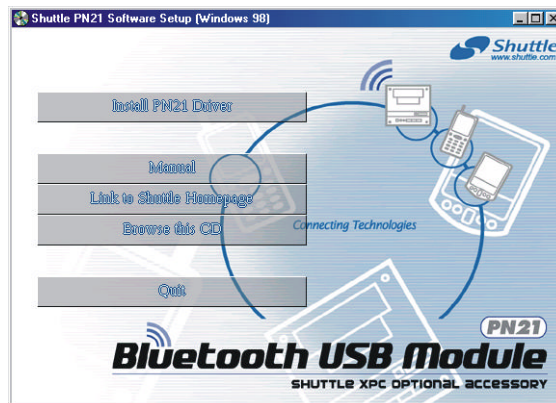
The software setup menu will appear after you insert Shuttle PN21 CD into a CD-ROM player. To prevent potential problems during installation, please use the bar, "Install PN21 Driver" on the CD menu. If the menu window does not automatically appear, utilize the Windows Explorer to browse this CD content, and click on the "setup" tool to run installation manually.

將浩鑫PN21光碟片放進光碟機後，軟體安裝程式畫面將自動出現在螢幕上。為了避免安裝軟體過程中有錯誤發生，請直接點選畫面上的“安裝PN21驅動程式”選項。若安裝畫面沒有自動出現，則請利用Windows檔案總管來瀏覽光碟內容，並點選“setup”工具以執行驅動程式安裝。

Note: Procedures of driver/software installation will be demonstrated under Windows 98, and those under other operating systems are of no difference.

注意：軟體安裝步驟將在Windows 98下進行示範，其它作業系統下的安裝步驟則等同之。

Note: CD windows will be presented in different languages according to the OS.
注意：光碟畫面會因作業系統語言介面的不同而顯示出不同的語言形式。



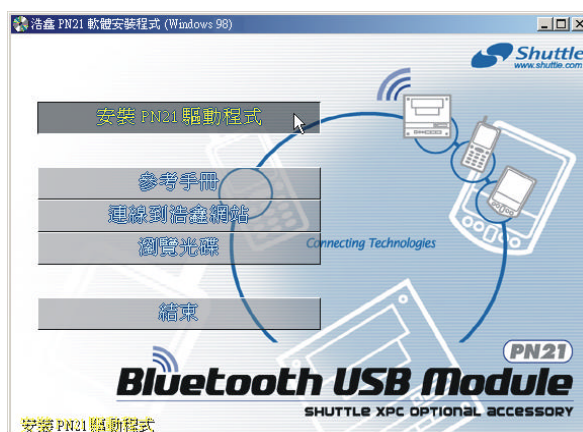
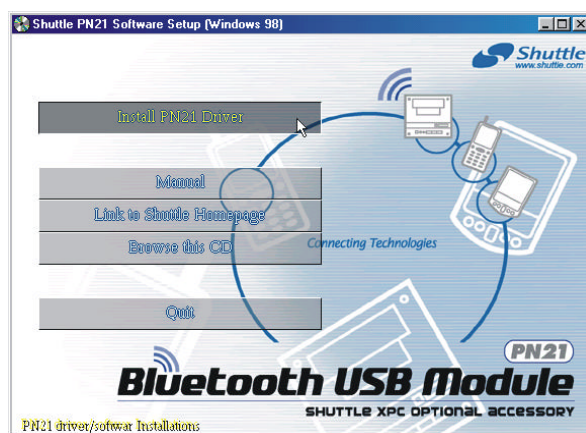
You can find five bars in this menu/光碟主畫面選項如下所示：

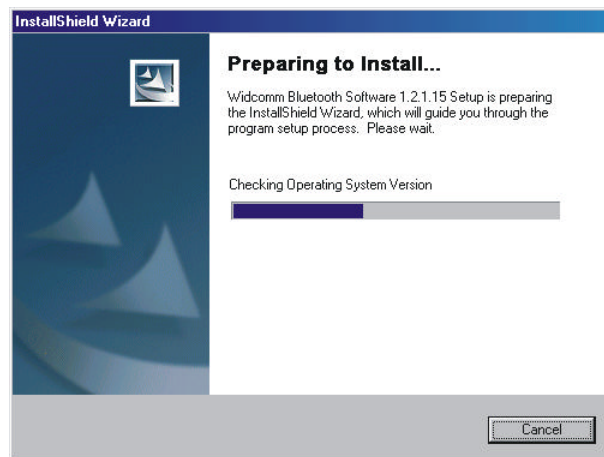
1. Install PN21 Driver/安裝PN21驅動程式；
2. Manual/參考手冊：Select “Install Acrobat Reader” if you need to install it to read the PN21 manual in PDF file/若您系統並無安裝Acrobat閱讀程式，則請點選“安裝Acrobat閱讀程式”選項以便瀏覽PN21參考手冊；
3. Link to Shuttle Homepage/連線到浩鑫網站；
4. Browse this CD/瀏覽光碟；
5. Quit/結束。

2.2.1 Install PN21 Driver/安裝PN21驅動程式

Step1. Press the button, "Install PN21 Driver" to run the Bluetooth USB Dongle installation. Shortly it opens an InstallShield Wizard dialog box as shown on page 9.

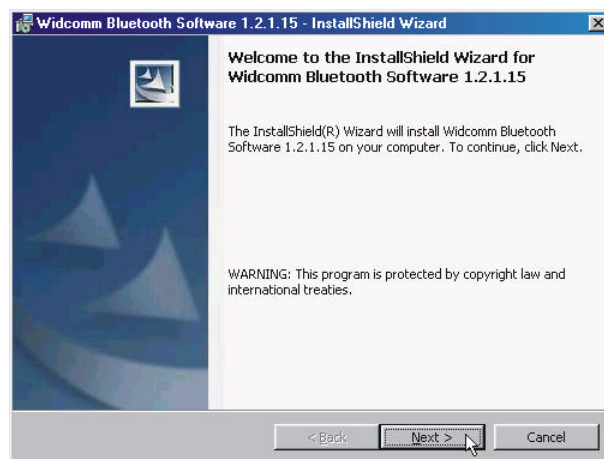
點選“安裝PN21驅動程式”選項，隨後即出現如第9頁所示之安裝精靈對話方塊。





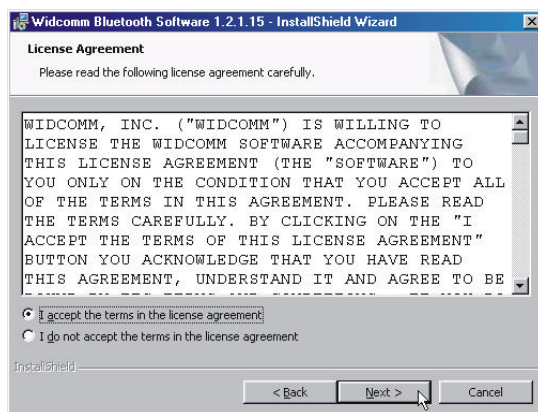
Step2. Click “Next” to continue.

點選 “Next/下一步” 以繼續安裝。



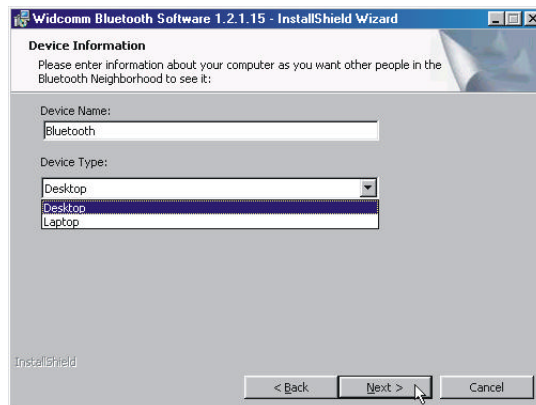
Step3. Choose “I accept the terms in the license agreement” to accept the License Agreement, and click “Next.”

選擇 “ I accept the terms in the license agreement/我接受合約內容 ” 選項，並按 “ Next/下一步 ” 繼續。



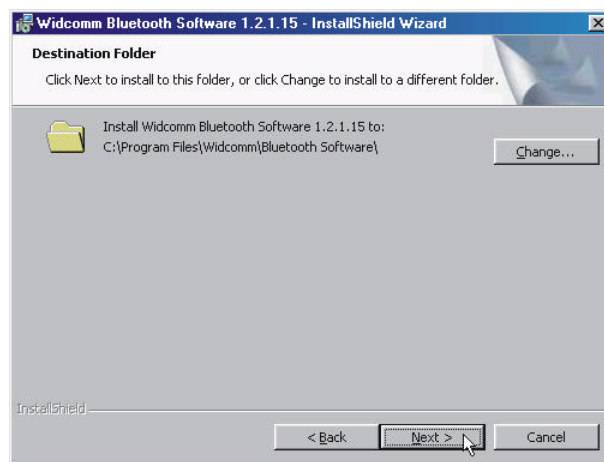
Step4. Key in a string you prefer in the “Device Name” field, which provides a distinct identification for your system as it interacts with other Bluetooth-enabled devices. Moreover, in the “Device Type” field, select a computer type you’re using now, and click “Next.”

在 “ Device Name/電腦名稱 ” 欄位鍵入任一名稱以作為分辨您的電腦和其它有藍芽裝置設備的依據，並在 “ Device Type/電腦類型 ” 欄位中選擇您現在所使用的電腦類型。按 “ Next/下一步 ” 繼續。



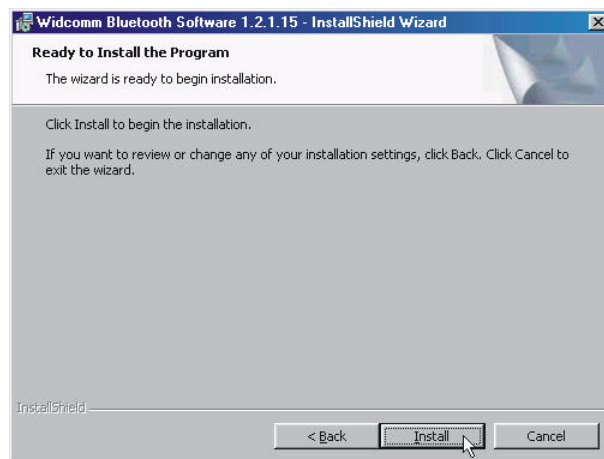
Step5. Click “Change” if you’d like to change the default folder for installing software to another one. When done, click “Next” to continue the installation.

如欲改變驅動程式預設安裝路徑時，請點選 “ Change/改變 ”。當安裝路徑設定好時，按 “ Next/下一步 ” 繼續。



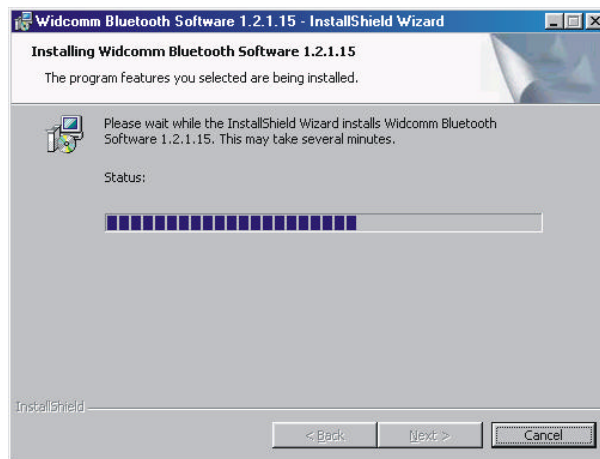
Step6. Click “Install” to begin the installation.

按 “ Install/安裝 ” 開始安裝驅動程式至指定路徑。



Step7.Start the copying files.

正在安裝驅動程式至電腦硬碟。

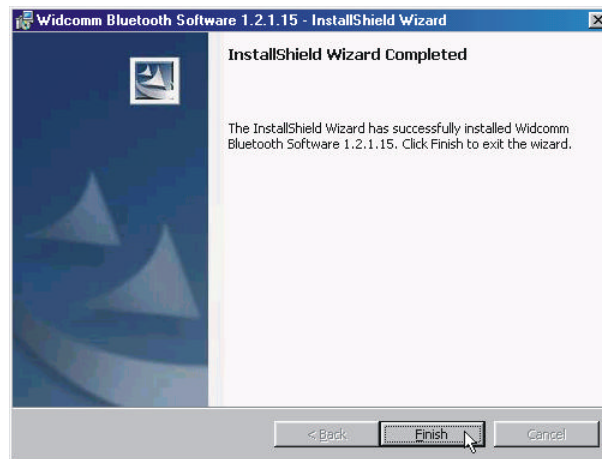


Note: If your OS is under Windows 98SE, 2000, or XP, it is possible to meet “Digital Signature Not Found,” or “Hardware Installation” issues during the installation. Please click “Yes” or “Continue Anyway” to confirm them for finishing the installation.

注意：如您的作業系統是Windows 98SE、2000或XP時，在安裝過程中有可能會出現“找不到數位簽章”或“硬體安裝”的訊息視窗。按“是”或“繼續安裝”以繼續驅動程式的安裝。

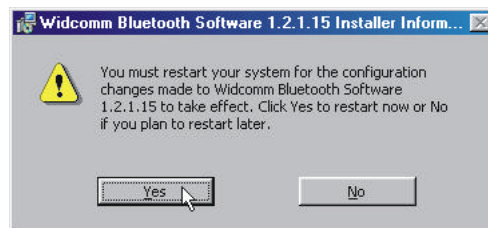
Step8. Click “Finish” to complete the installation.

按 “ Finish/完成 ” 結束安裝。



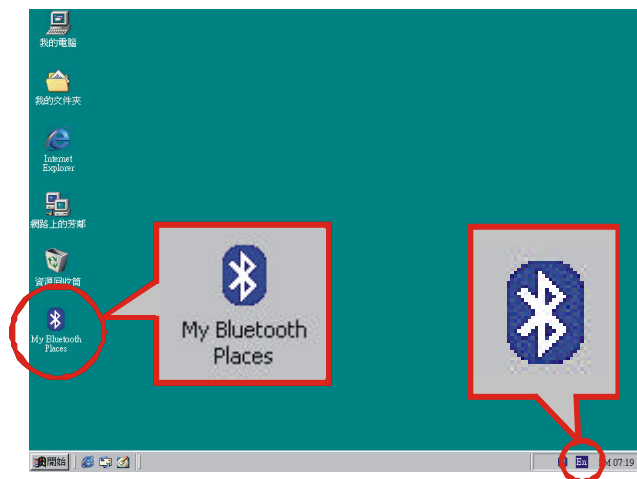
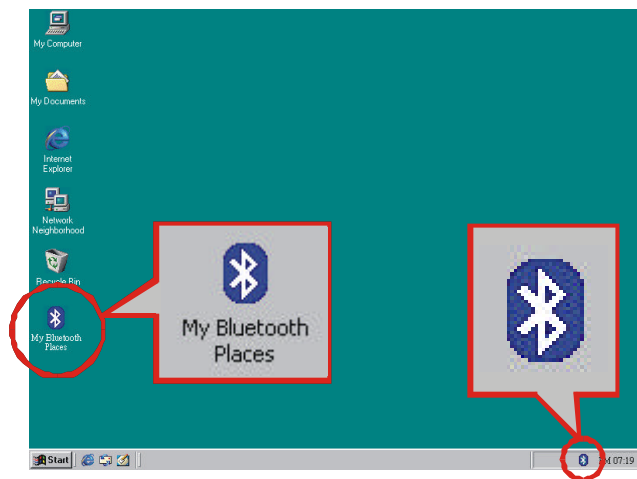
Step9. ~~Click~~ “Yes” to restart your system for confirming the installation is completed.

點選 “ Yes/是 ” 重新啟動電腦以確定安裝成功。



There are two new Bluetooth icons on the screen as your computer is logged in OS: one icon of “My Bluetooth Places” appears on the desktop; the other on the toolbar.

當電腦重新登入作業系統後，螢幕上會出現兩個新圖示：圖示 “ My Bluetooth Places/我的藍芽環境 ” 出現在桌面上；另一個圖示則在工作列中。

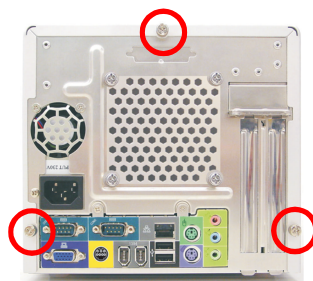


3.HARDWARE SETUP/ 硬體安裝

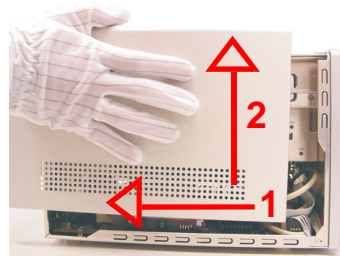
3.1 Hardware Installation/硬體安裝

Step1. Unscrew the case and remove it.

鬆開機殼上蓋3顆螺絲後，將上蓋移開並暫置一旁。



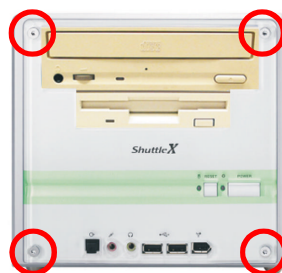
Unscrewing
鬆開螺絲



Remove the case
移開上蓋

Step2. Unfasten the four screws on the front-panel with an internal six-angle screw driver, and then remove the front-panel.

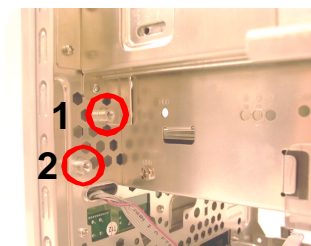
使用內六角螺絲起子將前面板上的螺絲鬆開，之後將前面板移開並暫置一旁。



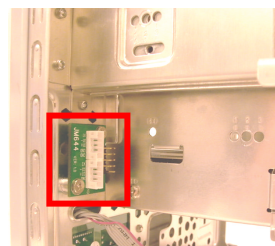
Unscrewing
鬆開螺絲

Step3. Fasten the USB daughter board with two attached screws to the holes #1 (as the picture presents) on the backside of the front-panel.

利用所附之兩顆螺絲，將USB子卡安裝於前面板後方，編號1&2(如圖所示)孔內。



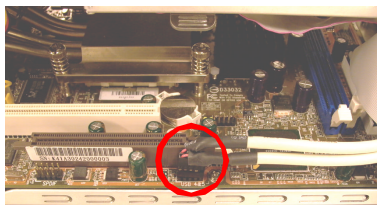
the fixed holes (1,2) for
USB daughter board
USB子卡定位孔 (1,2)



Locating completed
安裝完成

Step4. Plug one end of the USB cable for the daughter board into an extended USB port on the margin of the mainboard.

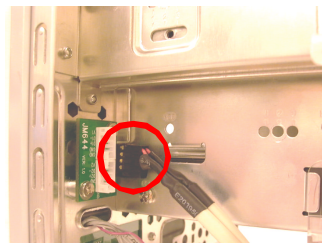
將USB子卡連接線一端連接至主機板邊緣之USB擴充插座。



Plug one end into a USB
port on the mainboard
將USB子卡連接線一端
連接至主機板上之USB
插座

Step5. Plug the other end of the USB cable into the black USB port on the daughter board.

將USB子卡連接線另一端連接至子卡上之黑色USB插座。

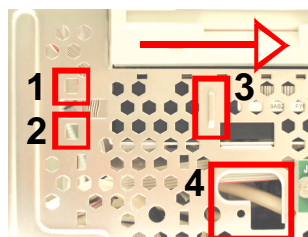


Plug the other end into a USB port
on the daughter board
將USB子卡連接線另一端連接
至子卡上之USB插座

Step6. Locate the USB Dongle sequentially into the holes #1 ~ #4 as the picture shows. Note that as locating the USB Dongle into the hole #3, you have to push it rightward.

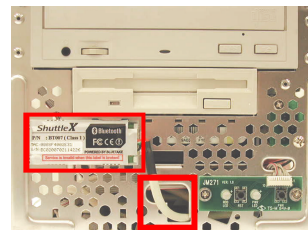
將藍芽裝置依序安裝於編號1~4(如圖所示)孔內。請注意當將藍芽裝置安置於編號#3孔內時，您必須將其向右推入。

the fixed holes (1,2,3) for USB Dongle
藍芽裝置定位孔 (1,2,3)



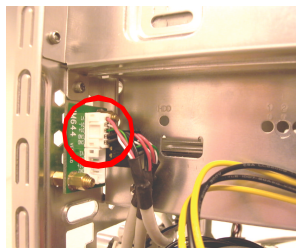
Push rightward
向右推入

the reserved hole (4) for USB cable
USB連接線穿入孔 (4)



Locating completed
安置完成

Step7. Connect the USB cable to a USB port on the daughter board.
將USB連接線一端連接至子卡上之USB插座。



Connect the USB cable to a USB port on the daughter board
將USB連接線一端連接至子卡上之USB插座

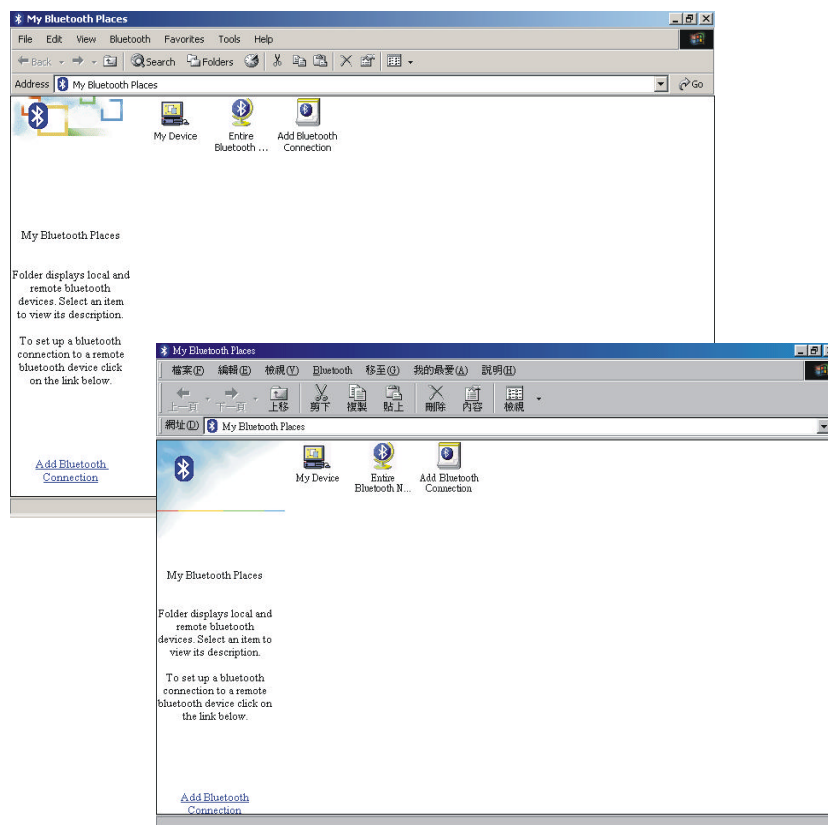
Step8. Replace the case and complete the installation.
將機殼上蓋蓋上並完成硬體安裝。

4. BASIC OPERATIONS/ 基本應用

4.1 Basic Operations/基本應用

The Bluetooth USB Dongle uses its own management software. After software is installed, a new icon will appear respectively on the desktop and toolbar. Double click the icon on the desktop or toolbar, and the “My Bluetooth Places” window will pop up as shown below.

浩鑫藍芽無線產品使用自訂的一套管理系統。軟體安裝完成後，桌面和工作列上都會出現一新藍芽圖示。在桌面或工作列上圖示點兩下，“My Bluetooth Places/我的藍芽環境”視窗將被開啟並顯示在螢幕上。



4.2 Local Device Services/本地端服務設定

Double click the “My Device” icon in the “My Bluetooth Places” window, and opens a sub-window.

在 “ My Bluetooth Places/我的藍芽環境 ” 視窗中的 “ My Device/我的設備 ” 圖示上點兩下，子視窗將被開啟並顯示在螢幕上。



“My Device” window presents all local services a Bluetooth server can provide. The services include:

在 “ My Device/我的設備 ” 視窗中顯示了伺服器端藍芽設備能夠提供的本地端服務，包括：

1. Bluetooth Serial Port/藍芽序列埠；
2. Dial-Up Networking/撥接上網；
3. Fax/傳真；
4. Network Access/網路連結；
5. File Transfer/文件移轉；
6. Information Exchange/資料交換；
7. Information Synchronization/資料同步化處理。

All services will be auto-startup as the Bluetooth software is initialized. Right click the icon of that service if you want to stop a service in action, and choose the “Stop” item in the pop-up menu.

在藍芽軟體驅動下，所有服務皆能自動提供。如欲終止某項服務時，只要在該項服務圖示上按滑鼠右鍵，並點選選單中的 “ Stop/終止 ” 項目即可。

4.3 Bluetooth Neighborhood Services/

藍芽芳鄰服務設定

Double click the “Entire Bluetooth Neighborhood” icon in the “My Bluetooth Places” window, to make PN21 USB Dongle search other Bluetooth-enabled devices in the vicinity, and display them in the window. Every device the USB Dongle detected can provide all the services as follows:



在 “ My Bluetooth Places/我的藍芽環境 ” 視窗中的 “ Entire Bluetooth Neighborhood/藍芽芳鄰 ” 圖示上點兩下，子視窗將被開啟並顯示在芳鄰內，PN21藍芽無線硬體所偵測到的其它有藍芽裝置的設備。這些設備皆能提供以下所有服務：

1. Bluetooth Serial Port/藍芽序列埠：

Establishes a wireless connection between two devices and enables them, as if a physical serial cable worked.

在兩個設備間建立起一條無形的序列連接線並使之作用，就如同傳統有形的連接線一樣。

2. Dial-Up Networking/撥接上網：

The client end, without a cable connected to a modem, can dial up to internet by a modem that is physically connected to the server end.

藍芽客戶端設備可以透過實際連接在藍芽伺服器端設備的數據機撥接上網。

3. Fax/傳真：

The client end can send a fax by a fax machine that is physically connected to the server end.

藍芽客戶端設備可以透過實際連接在藍芽伺服器端設備的傳真機傳送文件。

4. File Transfer/文件移轉：

You can easily browse, drag/drop, open, print, cut/copy/paste, delete, or rename files and folders between two Bluetooth-enabled devices (one device is in the local; the other in the remote).

在兩個(一個在本地端、一個在遠端)有藍芽裝置的設備間，您可以隨意地對文件和資料夾作瀏覽、拖曳/丟棄、開啟、列印、剪下/拷貝/貼上、刪除、或更名等功能。

5. Information Exchange/資料交換：

Allows two Bluetooth-equipped devices to exchange information, data, email messages, or notes.

使用者能在兩個有藍芽裝置的設備間，做出交換資訊、資料、電子郵件、或筆記等功能。

6. Information Synchronization/資料同步化處理：

Allows two Bluetooth-equipped devices to synchronize information, data, email messages, or notes.

使用者能在兩個有藍芽裝置的設備間，做出資訊、資料、電子郵件、或筆記同步化處理等功能。

7. Network Access/網路連結：

The client end, as if hardware to the LAN (Local Area Network), can do internet access by the server end that is physically connected to the LAN.

藍芽客戶端設備可以透過實際裝置在藍芽伺服器端設備的乙太網路卡上網。

5.CONFIGURATION UTILITY/ 軟體相關設定

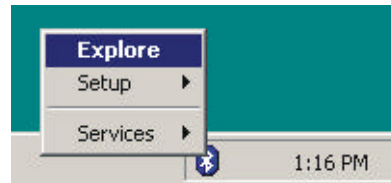
5.1 Bluetooth Console/藍芽控制台

After the Bluetooth software is installed, a new icon will appear on the toolbar. Right click the icon, and you can find there are several practical functions in the pop-up menu as shown below:

藍芽軟體安裝完成後，工作列上會出現一新圖示。在圖示上按滑鼠右鍵，您會看到有幾項功能項目顯示在選單中。各功能說明如下：

1. Explore/瀏覽: it opens the “My Bluetooth Places” window.

開啟 “ My Bluetooth Places/我的藍芽環境 ” 視窗。



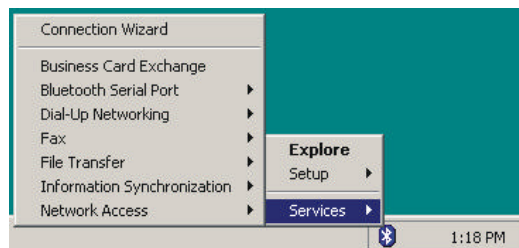
2. Setup/設定: it consists of the “Security” and “Configuration” settings.

包含 “ Security/安全性 ” 和 “ Configuration/進階設定 ” 項目。



3. Services/服務: it allows users to select the Bluetooth services directly and swiftly.

讓使用者能直接且快速地點選所需的服務項目。



5.2 Bluetooth Configuration/軟體相關設定

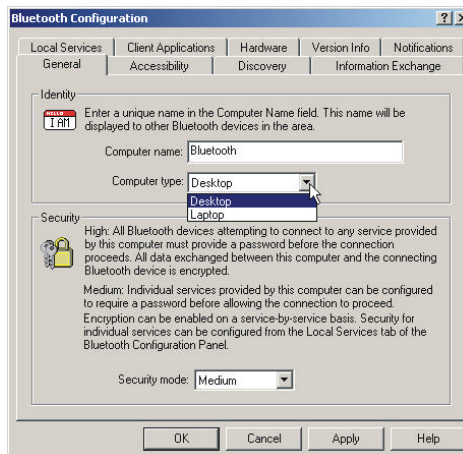
Right click the Bluetooth icon on the toolbar, select the “Configuration” setting under the “Setup” item in the pop-up menu, and you can find the “Configuration” setting falls into nine tabs in the “Bluetooth Configuration” window :

點滑鼠右鍵於工作列上的藍芽圖示，選擇 “ Setup/設定 ” 下的 “ Configuration/進階設定 ” 項目，您會看到此項目在 “ Bluetooth Configuration/藍芽環境設定 ” 視窗中共分為九個選項：

5.2.1 General Tab/一般設定選項

In the “Identity” section, give in the “Computer name” column a specific ID (between 1 to 247 characters) for your computer to be recognized by other Bluetooth-enabled devices in the Bluetooth neighborhood.

在 “ Identity/身分識別 ” 標題下的 “ Computer name/電腦名稱 ” 欄位中鍵入一字串(介於1到247個字元)。這是作為在藍芽芳鄰內，辨別您的電腦和其它藍芽設備的依據。



As to the “Computer type” column, choose a computer type (“Desktop” or “Laptop”) you’re using now.

在 “ Computer type/電腦類型 ” 欄位中，選擇您正在使用的電腦類型為 “ Desktop/桌上型電腦 ” 或 “ Laptop/筆記型電腦 ”。

Moreover, in the “Security” section, select a degree of security in the “Security mode” column between “High” (that requires a password for all computers before a connection is established, and “Medium” (that requires a password and encryption for every services provided by your computer).

在 “ Security/安全性 ” 標題下的 “ Security mode/安全模式 ” 欄位中，選擇高安全性模式(此模式會要求所有電腦在連線未建立前必須輸入密碼)，或中安全性模式(此模式會要求在進入您電腦所提供的各項服務前必須輸入密碼與建立加密措施)。

5.2.2 Accessibility Tab/進階設定選項

This tab determines which Bluetooth-enabled device/device(s) is/are allowed to access your computer. The options are described as below: 此選項能讓您決定哪一個或哪些藍芽設備能與您的電腦連線。各功能說明如下：

“Let other Bluetooth devices discover this computer/允許遠端藍芽設備瀏覽您的電腦”

Checked is the default. This function, however, is disabled as the option of “No devices to connect” in the “Allow” column is selected.

預設值為允許遠端藍芽設備瀏覽您的電腦。當 “ Allow/同意 ” 欄位中的 “ No devices to connect/所有設備皆不連線 ” 項目被選取時，此功能將無效。

“Allow/同意”

The column is divided into four options as follows:

此欄位共分為四個選項：

1. “All devices to connect/所有設備全部連線”：

the default setting, which allows other devices discover this computer without restrictions.

此選項為預設值。允許遠端設備能夠毫無限制地瀏覽您的電腦。

2. “No devices to connect/所有設備皆不連線”：

allows this computer require a connection to a remote device, but never allows the latter connected to this computer or use services.

此選項允許您的電腦要求連線至遠端藍芽設備；但不允許遠端藍芽設備連線至您的電腦，或使用服務功能。

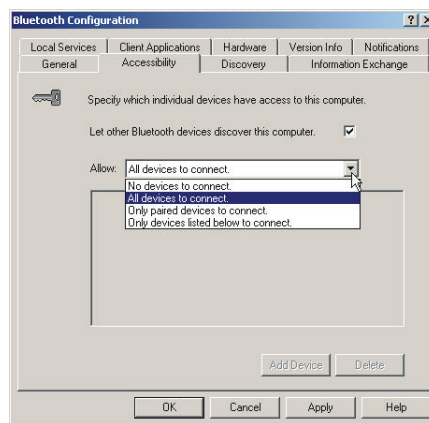
3. “Only paired devices to connect/只有被配對的設備才連線”：

allows devices that have been paired connected to this computer. 此選項允許只有被配對的設備才可以連線至您的電腦。

4. “Only devices listed below to connect/只有選單中的設備才連線”：

allows devices that have been added in the “Add Device” box connected to this computer.

此選項允許只有被選進選單中的設備才可以連線至您的電腦。



5.2.3 Discovery Tab/瀏覽選項

This tab offers a periodic search for other Bluetooth devices, and those that have been discovered will be displayed in the “Entire Bluetooth Neighborhood” window.

此選項能讓您的電腦定時搜尋其它藍芽設備，搜尋結果將被顯示在 “ Entire Bluetooth Neighborhood/藍芽芳鄰 ” 視窗中。

“Look for other Bluetooth devices/搜尋其它藍芽設備”

allows this computer to perform periodic search for remote devices in the background. Follows the steps below to perform this function:

允許您的電腦定時搜尋其它藍芽設備。請依照下列設定步驟：

1. Check the option of “Look for other Bluetooth devices”;

將 “ Look for other Bluetooth devices/搜尋其它藍芽設備 ” 選項打勾；

2. Enter a number between 1 and 60 in the “Every minutes” box, for setting the time of periodic search;

在 “ Every minutes/間隔搜尋時間 ” 欄位中鍵入1到60等數字；

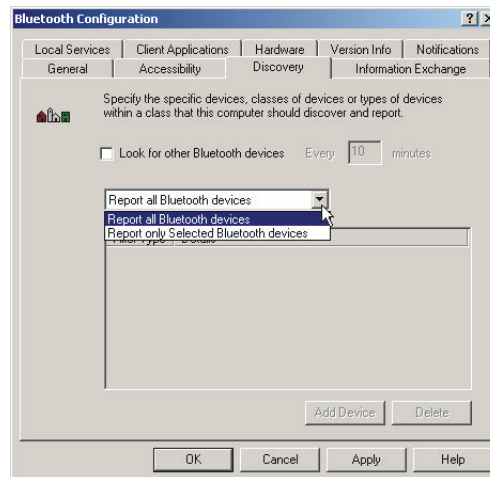
3. Click “OK” to confirm the setting.

按 “ OK/完成 ” 鍵以儲存設定值。

“Report all Bluetooth devices/顯示所有搜尋到的藍芽設備”

The devices found by your computer will be displayed in the “Entire Bluetooth Neighborhood” window. This option is the default setting.

經由您的電腦搜尋到的藍芽設備將被顯示在 “ Entire Bluetooth Neighborhood/藍芽芳鄰 ” 視窗中。此選項為預設值。



“Report only Selected Bluetooth devices/只顯示搜尋清單中的設備”

displays in the “Entire Bluetooth Neighborhood” window, the devices that have been added to this tab by pressing the “Add Device” button.

按 “ Add Device/加入其它藍芽設備於搜尋清單中 ” 鍵，選擇欲顯示於 “ Entire Bluetooth Neighborhood/藍芽芳鄰 ” 視窗中的藍芽設備即可。

Note: Remember to select the “Report all Bluetooth devices” item as you press “Delete” to cancel all the added devices in this tab. Otherwise, an error message will occur as you click “OK.”

注意：當您按 “ Delete/刪除 ” 鍵移除所有搜尋清單中的設備時，請記得選取 “ Report all Bluetooth devices/顯示所有搜尋到的藍芽設備 ” 項目。否則當您按下 “ OK/完成 ” 鍵時，螢幕上將會出現錯誤訊息方塊。

5.2.4 Information Exchange Tab/資料交換選項

This tab allows to change storage folders for data/objects, and thus modifies the attribution of these items. It includes:

此選項能讓您改變資料或物件的存放位置，並進而修正其屬性。各項目說明如下：

“My Shared Directory/我的資源分享路徑”

Appoint a directory allowed to access by other devices. You can also change the appointed directory to another or new one.

指定一個允許其它遠端藍芽設備共用的資料夾路徑。您也能改變此路徑，或另外新增一個分享路徑。

“My Business Card/我的電子卡片存放路徑”

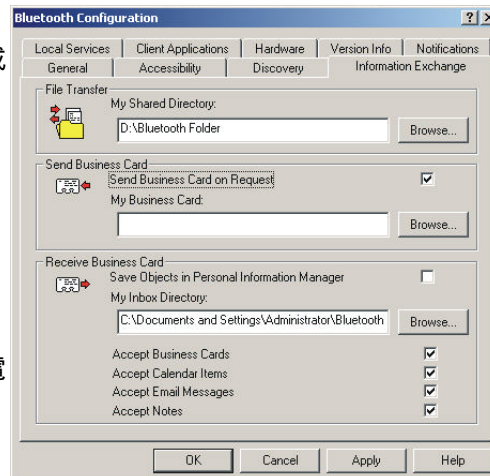
Indicate a location for situating your e-business cards as sending them out from your computer.

指定一個您的電子卡片存放路徑，以便於從您的電腦中傳送出去。

“My Inbox Directory/我的資源存放路徑”

Point out a directory for accommodating objects, such as e-business cards, calendar items, e-mail messages, and notes as receiving them from other remote devices.

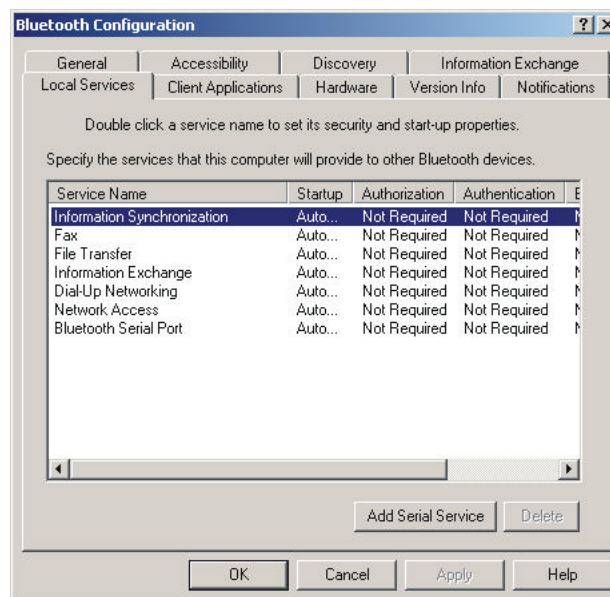
在從遠端設備接收如：電子卡片、行事曆、電子郵件、筆記等物件至您的電腦時，指定一個存放它們於您的電腦中的路徑。



5.2.5 Local Services Tab/本地端服務選項

This tab configures the properties of local services provided to other Bluetooth-enabled devices, the properties that contain the items of “Startup,” “Authorization,” “Authentication,” “Encryption,” “COM port,” and “Modem type.” The tab also includes the buttons to “Add” one or more user-defined serial services, and/or “Delete” the selected services.

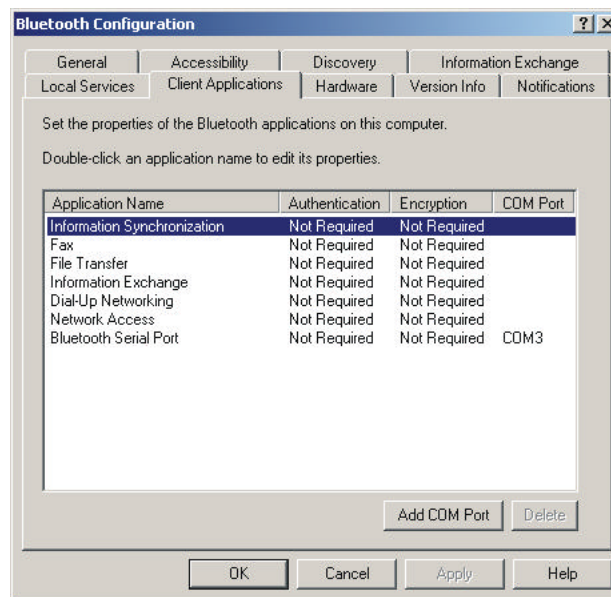
此選項能讓您設定提供至遠端藍芽設備的本地端服務內容，包括：“Startup/啟動”、“Authorization/授權”、“Authentication/確認”、“Encryption/加密”、“COM port/序列埠”、“Modem type/數據機類型”等項目。您也能使用此選項上的“Add Serial Service/新增序列埠服務”鍵來增加您指定的序列埠服務，或按“Delete/刪除選定服務”鍵來移除被選擇的服務。



5.2.6 Client Applications Tab/客戶端應用程式選項

This tab configures the properties of client applications that your computer is going to use for access into the services on remote devices. The properties comprise the items of “Authentication,” “Encryption,” and “COM Port.” The tab also includes the buttons to “Add” one or more user-defined COM ports, and/or “Delete” the selected services.

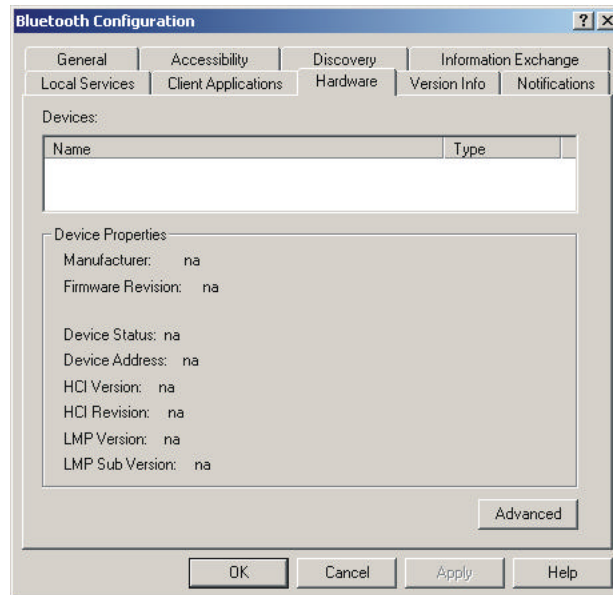
為了能和遠端藍芽設備所提供的服務連線，此選項能讓您設定您的電腦中將要使用的客戶端應用程式內容，包括：“Authentication/確認”、“Encryption/加密”、“COM Port/序列埠”等項目。您也能使用此選項上的“Add COM Port/新增序列埠”鍵來增加您指定的序列連接埠，或按“Delete/刪除選定服務”鍵來移除被選擇的服務。



5.2.7 Hardware Tab/硬體選項

This tab presents the current properties of your Bluetooth device. Users can change the default setting of the hardware, such as “Country Code” and “Maximum Transmission Power,” by clicking the “Advanced” button.

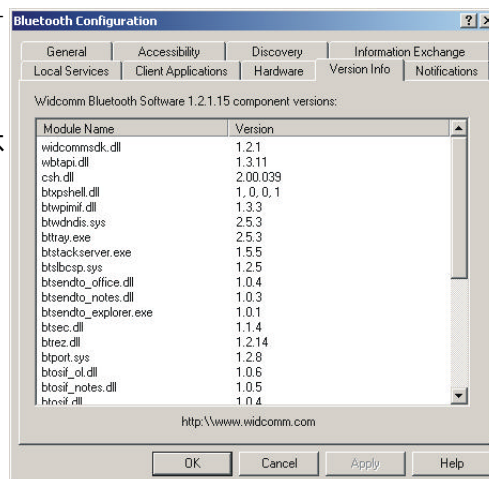
此選項顯示了您正在使用的藍芽裝置內容。藉由此選項上的“Advanced/硬體進階設定”鍵，使用者可以改變這些內容的預設值，例如：“Country Code/國家代碼”和“Maximum Transmission Power/最大傳送功率”等項目。



5.2.8 Version Info Tab/硬體版本資訊選項

This tab presents the information of versions for every component, and it cannot be configured.

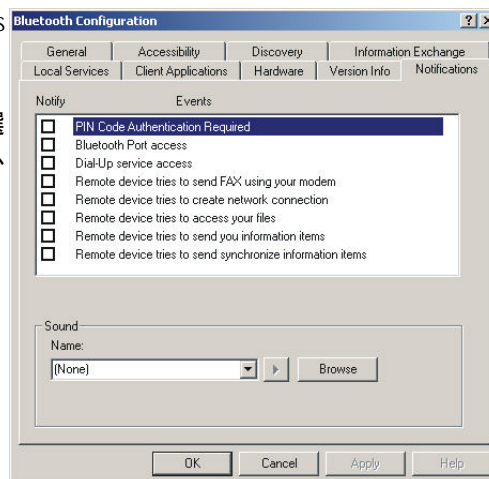
此選項顯示了藍芽裝置內不能更動的程式版本資訊。



5.2.9 Notifications Tab/通知選項

This tab serves to notify users a particular event by playing its specific sound.

在不同的情形發生時，此選項能設定其專屬撥放音效以告知使用者。



6. Troubleshooting/ 疑難排解

6.1 Symptom (S) & Remedy (R)/問題與解答

- S: Can't finish the Bluetooth driver installation.
無法完成藍芽軟體的安裝？
- R: The driver program may take several minutes to analyze your system while the installation is processing; please pay more patience waiting the entire procedure. Moreover, inspect whether the Bluetooth driver CD is damaged.
由於藍芽驅動程式須對作業系統的檔案作資料分析與連結，因此在安裝過程中會耽擱數分鐘的時間，請您耐心等待。並請檢查驅動程式光碟片是否有損毀或刮片的情形。
- S: Can't find any remote device in the "Entire Bluetooth Neighborhood" window, or can't discover any service on a remote device.
無法在 " Entire Bluetooth Neighborhood/ 藍芽芳鄰 " 視窗內找到任何的遠端藍芽設備，抑或無法找到該遠端設備的各項服務？
- R: Make sure the remote device is powered on or within range (100m).
請確定遠端藍芽設備已開啟電源或位於無線電波可涵蓋的範圍 (100 公尺)內。
- S: The "Network Access" service has been found on the remote device, but can't be contacted.
雖然已經找到遠端設備的 " Network Access/ 網路連結 " 服務，但卻無法使用？
- R: If the remote device you connected uses Windows 98SE/ME, you must ensure it has already installed an internet routing software (such as WinRoute Lite). You can get a downloadable version of WinRoute Lite from the website at www.tinysoftware.com.
倘若遠端藍芽設備的作業系統是採用 Windows 98SE/ME，那您必須先確定該遠端電腦已經安裝如 WinRoute Lite 的網路連線分享軟體。您可以到網址 www.tinysoftware.com 下載試用版版本。
If the remote device you connected uses Windows 2000, you must ensure it has already enabled the "Internet Connection Sharing" function. Please follow the steps below:

倘若遠端藍芽設備的作業系統是採用 Windows 2000，那您必須先確定該遠端電腦已經將“Internet 連線共用”的功能打開。設定方法如下：

1. On the toolbar, select “Start > Settings > Control Panel > Network and Dial-up” items;
在工作列上，點選“開始>設定>控制台>網路與撥號連線”項目；
2. Right click on the “Local Area Connection” icon, and select “Properties” in the pop-up menu;
於“區域連線”的圖示上按滑鼠右鍵，在彈出式選單中選擇“內容”項目；
3. Select the “Sharing” tab;
選擇“共用”標籤頁；
4. Enable the “Internet Connection Sharing” function;
將“Internet 連線共用”的功能打開；
5. When the warning window appears, press “Yes” to confirm the change.
當警告視窗出現時，請按下“是”按鈕以確定變更。

S: Can't find services on the local device.
無法找到本地端的各項服務？

R: Make sure the USB Dongle's cable has already been plugged into the USB port.
請確定藍芽裝置的 USB 連接線已經連接至電腦的 USB 插座。

S: Does Shuttle USB Dongle support Windows XP? If yes, is there any problem that may be exposed?
浩鑫藍芽裝置是否有支援 Windows XP 作業系統？若支援，那在使用上是否會產生任何問題？

R: Yes, Shuttle USB Dongle supports Windows XP. The Bluetooth software functions the same, regardless of the supported versions of Windows. The only possible defect is that you cannot see the Bluetooth related icons in the “Entire Bluetooth Neighborhood” window. The solution is to click the “Large icons” icon on the “Standard buttons” column in the “Entire Bluetooth Neighborhood” window.

是的，浩鑫藍芽裝置支援 Windows XP 作業系統。此外，在不同作業系統下的藍芽軟體在功能上並無二致；但在 Windows XP 下的 “ My Bluetooth Places/ 我的藍芽環境 ” 視窗中的項目安排方式會與其它作業系統稍有不同。您必須點選視窗中左方的文字說明項目後，相對應的圖示才會出現在右方的視窗中。

S: How to use the “Fax” service?

如何使用 “ Fax/ 傳真 ” 服務？

R: Make sure the remote device you will use has physically been connected to a fax machine or a modem with a fax function; or
請確認遠端藍芽設備已經實際連接到傳真機或者具備有傳真功能的數據機上，或

Install a Fax software such as WinFax into your system; or
在您的電腦中安裝一套傳真軟體，例如 WinFax ，或

Replace the default fax modem with a Bluetooth Fax modem in the properties of the Fax software.

將傳真軟體內的傳真機設定改為 Bluetooth Fax modem/ 藍芽傳真數據機。

S: Can't discover the “Dial-Up Networking” service on the remote device.

無法找到遠端電腦的 “ Dial-Up Networking/ 撥接上網 ” 服務？

R: Make sure whether a modem is physically attached to the remote device you are going to connect to; or

請確認遠端藍芽設備已經連接到可撥接上網的數據機上，或

The modem driver has been installed in the remote device.

該數據機的驅動程式已經安裝於遠端藍芽設備內。

S: The “Dial-Up Networking” service has already been established, but cannot reach the internet.

已經和遠端電腦建立好 “ Dial-Up Networking/ 撥接上網 ” 服務的連線，但是卻無法瀏覽網路？

R: Make sure if the TCP/IP setting is correct. The TCP/IP value is provided by your ISP.

請確認 DNS 伺服器的 IP 位址是否已經設定。該位址通常由您的 ISP 所提供。

cannot dial up through it.

藍芽設備已經找到有藍芽裝置的手機，但是卻無法透過它上網？

- R: Make sure your telecommunication provider offers either the WAP or GPRS service; or

請確定您的手機電信業者有開放 WAP 或 GPRS 服務，或

The configuration of WAP or GPRS on a mobile phone is exact; or
手機上的 WAP 或 GPRS 設定正確，或

Your mobile phone can dial up via the WAP or GPRS function before using the USB Dongle's "Dial-Up Networking" service.

在未使用浩鑫藍芽裝置的“Dial-Up Networking/撥接上網”服務功能之前，您的手機能以 WAP 或 GPRS 服務撥接上網。

- S: Is it possible for a local Bluetooth-enabled device to connect to two or more remote Bluetooth-enabled devices at the same time?

在同一時間內，能不能有多台裝置有浩鑫藍芽的遠端電腦連接到一本地端藍芽電腦？

- R: The Bluetooth wireless network permits eight Bluetooth-enabled devices in existence, depending on degrees of interference around a Bluetooth environment. In practice, whether a local device connects to other remote device, you can still see at least 7 remote devices in the "Entire Bluetooth Neighborhood" at the same time. So a local device can't simultaneously contact with others as it is communicating with a specific remote device.

藍芽無線網路技術可以讓八台藍芽設備同時並存在同一藍芽無線環境中。在實際應用上，無論您的本地端藍芽設備是否有與遠端藍芽設備連線，您都可以在“Entire Bluetooth Neighborhood/藍芽芳鄰”視窗中看到至少七台的其它遠端藍芽設備。但是當您與某一遠端藍芽設備進行連線時，是無法同時再與其它遠端藍芽設備進行連線的。

- S: Why does a remote Bluetooth-enabled device that has been disconnected remain in the "Entire Bluetooth Neighborhood" window?

為什麼明明已經和某一遠端藍芽設備斷線了，但是在“Entire Bluetooth Neighborhood/藍芽芳鄰”視窗中還是有它的存在？

R: This situation happens because two Bluetooth devices have been paired. In this case, the icon of a remote paired device will remain in the "Entire Bluetooth Neighborhood" window, whether it is within range. To dissolve the paired relationship in-between, please follow the steps:

會出現這個情形是因為兩個藍芽設備已經經過配對(即遠端設備的圖示旁邊有打勾記號)。無論該遠端設備使否在訊號接收範圍內，" Entire Bluetooth Neighborhood/ 藍芽芳鄰 " 視窗中仍會保留該遠端設備的圖示。若要移除該圖示，請依照下列步驟：

1. Right click on the Bluetooth icon on the toolbar, and select "Setup > Security" as the pop-up menu appears;
在桌面工具列的藍芽圖示上按滑鼠右鍵，在選單中選擇 " Setup/ 設定 > Security/ 安全性 " 項目；
2. Choose the one you'd like to dissolve the paired status in the "Paired Devices" list, and press the "Delete" button;
在 " Paired Devices/ 已配對藍芽設備 " 清單中，選擇不再需要的設備，並按 " Delete/ 刪除 " 鍵移除；
3. Press the "Done" button to close the window;
按下 " Done/ 完成 " 鈕以關閉視窗；
4. Open the "Entire Bluetooth Neighborhood" window and press "Search" to look for other remote Bluetooth devices again. You will find the paired device won't appear if it is out of range.
再次打開 " Entire Bluetooth Neighborhood/ 藍芽芳鄰 " 視窗，並按 " Search/ 搜尋 " 鈕以搜尋遠端藍芽設備。之後您可以發現之前已配過對的遠端設備不再有打勾的記號；若該設備不在訊號範圍內，則其圖示將不會出現在視窗中。

S: I have done everything, but the USB Dongle still doesn't work. What shall I do?

我完全依照說明安裝浩鑫藍芽裝置，但是還是無法正常運作。我是否遺漏某些步驟或者有其它的解決方式？

R: If you meet this problem, please remove the present Bluetooth software driver and have it reinstalled.

如果您遇到這個問題，請先移除藍芽軟體再重新安裝之即可。

S: How do I create my own business card in a local device? And how do I send my card or receive others' from remote Bluetooth devices?

我要如何製作自己的電子名片？又如何將名片傳送給別人、或從遠端藍芽設備接收別人的名片？

R: The USB Dongle supports Microsoft Outlook items, such as *.vcf, *.vcd, *.vcs, *.vnt, and *.vmg formats. You can create your own business card in Microsoft Outlook. To send, receive, or exchange the items, right click the "Inbox" icon in the "Bluetooth Neighborhood" window of a remote device, and select one option you want to execute in the pop-up menu.

浩鑫藍芽裝置支援微軟的 Outlook 物件，例如 *.vcf、*.vcd、*.vcs、*.vnt 以及 *.vmg 等格式。您可以在 Outlook 中製作個人的名片檔。若要傳送、接收或交換名片時，請於 "Entire Bluetooth Neighborhood/ 藍芽芳鄰" 視窗中挑選欲進行動作的遠端設備，並於該設備的 "Inbox/ 收件匣" 圖示上按滑鼠右鍵，再於選單中點選欲進行的項目即可。